

Transforming Cities Fund Connected Leicester



EDTT Scrutiny – 22nd April 2021



1. Beaumont Leys Park and Ride

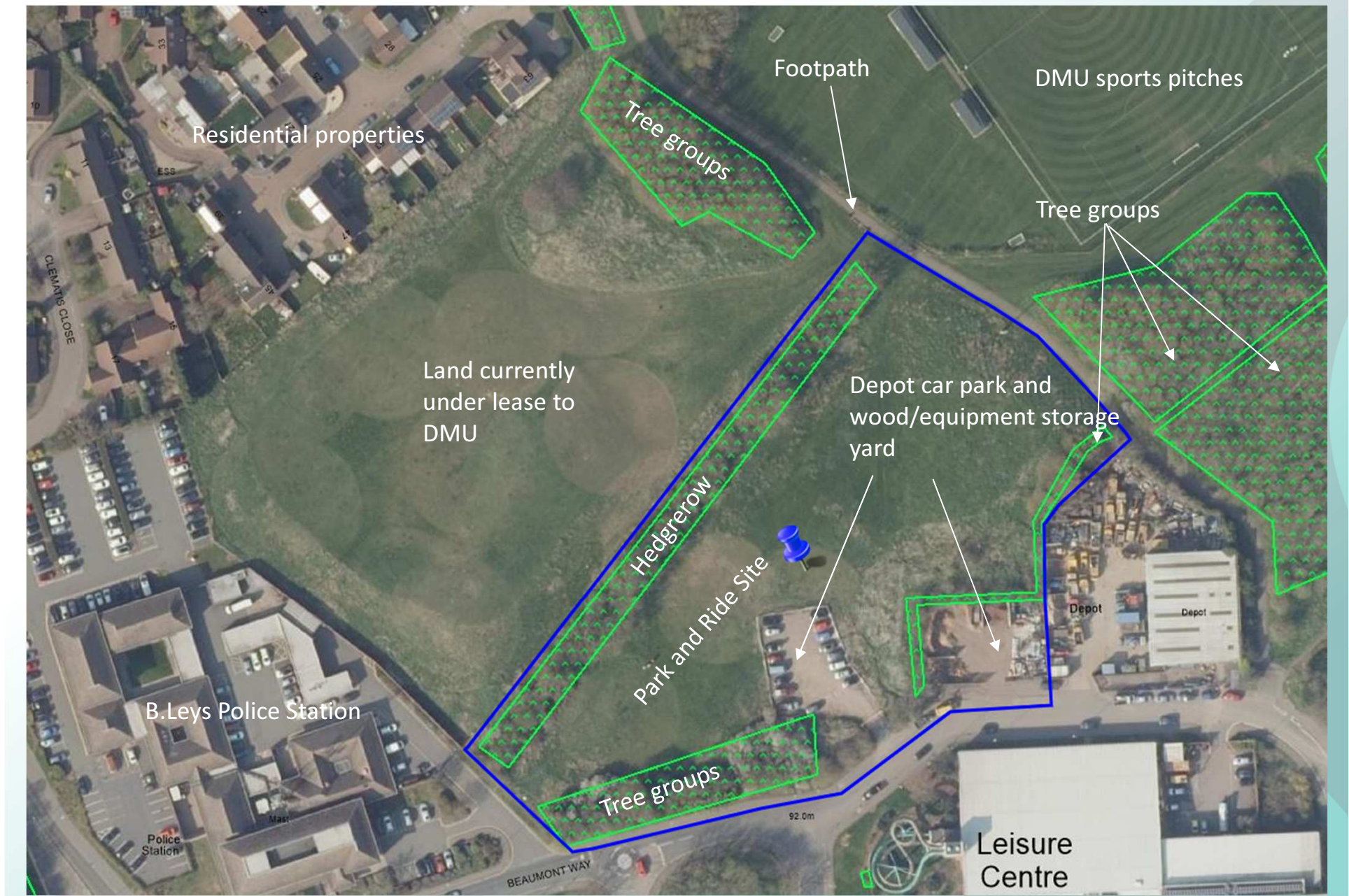
1. This scheme will deliver a 300 space park and ride site on LCC owned land adjacent to Beaumont Shopping Centre
2. It will provide a new park and ride service located between the existing Birstall and Meynells Gorse sites and drawing users from the north west of the city/county
3. existing services (Hospital Hopper, 14A/40) will be extended to the site to give a 10-15 minute connection to both the City Centre and Glenfield Hospital.
4. The current budget estimate for the scheme is £1.4m - funded through Transforming Cities grant and council capital funds

2. Beaumont Leys Park and Ride

Design summary

- 300+ car parking bays including EV chargers
- Sheltered waiting facility with seating and real-time information board
- Secure cycle parking facility (estimate: 30 spaces)
- Dedicated bus turning area
- Ecology enhancements
 - Biodiversity gain
 - Recovery of DMU lease to offset on land adjacent to north west of site

Site Location



Site Image



Looking NW on site
(car park behind)

Beaumont Leys Park and Ride Plan



Next Steps

- The site will require planning permission - a pre- application inquiry has been submitted
- Public engagement due to commence May 2021
- The scheme is programmed to be on site from late summer 2021